



## ILLINOIS STATE BEEKEEPERS ASSOCIATION

# BULLETIN

January/February 2007 • Volume 89 Number 1

## ISBA Meets for 115th Convention

Minutes by Secretary Rita Taylor

President Ken Haller called the 115th Convention of the Illinois State Beekeepers' Association to order at 9:00 a. m. President Haller welcomed everyone and shared with the membership the many accomplishments of the Association during the past year.

Steve Chard, Chief Apiary Inspector and Supervisor of Apiary Inspections, was asked to introduce Charles "Chuck" Hartke, Director, Illinois Department of Agriculture. Director Hartke welcomed member of the Illinois State Beekeepers' Association and discussed the fuel situation and how Illinois will profit from the corn for ethanol. He also offered his assistance should the beekeepers experience any problems in the future.

President Haller called for the Secretary's Report. Secretary Rita Taylor reported all members have received the Minutes of the 114th Convention via the Illinois State Beekeepers' Bulletin. Secretary Taylor read the expenses and membership for the period November 1, 2005 to November 1, 2006. The Secretary's Report was approved.

President Haller called for the Treasurer's report. Treasurer Udell Meyer reported the income and expenses of the association for the period November 1, 2005 to November 1, 2006. The Treasurer's report was approved as read.

President Haller introduced Steve Chard. Mr. Chard provided a detailed report on the condition of the hives around the state by providing statistics of disease, mites, inspection,

and chemicals approved by the United States Department of Agriculture.

President Haller introduced the officers of the Illinois State Beekeepers' Association and provided information on issues being undertaken by the Association with the appointment of various committees.

President Haller announced the 2006 Beekeeper of the Year, by presenting Ronald F. Fischer of the Cook DuPage Beekeepers' Association with a plaque. Mr. Fischer was recognized for his support of the beekeeping industry and his service to the Illinois State Beekeepers' Association throughout the years.

President Haller introduced Professor Roger Hoopingarner, Professor Emeritus, Michigan State University whose topic was "Wintering Honey Bees with Varroa Mites." Dr. Hoopingarner discussed some very good points on the importance of the cluster. He stated it is best to requeen in the fall, and treat and feed hives early—no later than October 1st. It is also very important to clean up dead hives early in the spring.

Following lunch, President Haller reconvened the meeting by asked local association members to report on their local meetings as well as other activities their associations are involved

*(Continued on page 2)*

## Mark Your Calendar

The Midwest Beekeeping Symposium—June 9, 2007—McHenry County College, Crystal Lake, IL  
Stay tuned for more information.

(Continued from page 1)

with throughout the year.

President Haller introduced Devon and Cindy Howald, Owners, Majenica Creek Honey Farm, Huntington, Indiana. Mr. and Mrs. Howald began their beekeeping career with two hives, and they now have over 2000 hives. Mr. Howald shared his experiences (good and bad) and also discussed the pollination of almonds in California. He stated that he could not fully depend on honey and as a supplement he sells candles, soaps, nucs, and other products. The entire Howald family is now involved with the business.

President Haller reintroduced Dr. Roger Hoopingarner to speak on the topic of "Keeping Two Queen Colonies." The advantage of beekeeping with two queen colonies included more forgers, more honey, winter better, able to produce over 300 pounds of honey gaining 25-30 pounds per day. Dr. Hoopingarner also shared some of the disadvantages—difficult to inspect, supers very high, need to obtain new queens every year, need more room faster than single queen colonies.

President Haller introduced Stu Jacobson,

University of Illinois, Springfield. Professor Jacobson remarked on the small hive beetle indicating it is not just another varroa. The hive beetle is not a problem in northern states if a person practices good beekeeping. The beetle can move around within ten miles. They also like protein and thrive on pollen.

Election of Officers—President Haller introduced Jill Mayes, Chairperson of the Nominating Committee. The Nominating Committee selected the following members as nominees:

President	Ken Haller
Vice President	Phillip Raines
Secretary	Rita Taylor
Treasurer	Udell Meyer
Southern Director	Raymond Chapman

Jill Mayes called three times for nominees from the floor for each of the offices. After no other nominations were heard, each of the nominees listed above was election to their respective office.

President Haller thanked everyone for their attendance, and with no further business the 115th Illinois State Beekeeper's Association Convention was adjourned.β

## Illinois Announces its 2003 Beekeeper of the Year

The Illinois State Beekeepers Association is proud to announce its Beekeeper of the Year! The Illinois State Beekeepers Association - Beekeeper of the Year for 2006 is Ron Fischer! The ISBA, each year, recognizes a member who has shown incredible passion and dedication to the ISBA's key objectives and to the Beekeeping industry. At its recent Annual Fall Meeting, the ISBA presented Ron with a plaque of recognition.

Please join the ISBA in congratulating Ron as the 2006 Illinois State Beekeepers Association Beekeeper of the Year!



Il-  
β

Are you interested in reading the City of Evanston ordinance governing the keeping of bees? It is on line at -

<http://66.113.195.234/IL/Evanston/index.htm>

# Zoning and Farm Assessment for Beekeepers in Illinois

By Karen Belli (in consultation with the Lake County Assessors office)

In Illinois, your right to keep bees on your property is determined by the zoning ordinances of your local community which permit or restrict certain uses on a particular parcel of land. Copies of the zoning ordinances for your property are available at the city, village or county office that has jurisdiction over your property.

Property may qualify for a farmland assessment even though the property has a different zoning classification. Agricultural zoning by either the county or municipality does not guarantee a farm assessment and likewise non-agricultural zoning does not prohibit a farm assessment, since a farm assessment is based on the use of the land and not the zoning. Illinois statute defines farm as "any property used solely for the growing and harvesting of crops; for the feeding, breeding, and management of livestock; for dairying or for any other agricultural or horticultural use or combination thereof; ... the keeping, raising and feeding of livestock or poultry, ... fur farming, bees, fish and wildlife farming." [35 ILCS 200/1-60]

Bees and the township assessor—Does keeping bees affect your real estate assessment?  
Maybe!

A farm assessment is a preferential assessment provided for by the Illinois Property Tax Code. The assessment is based upon the agricultural use value of the land rather than the market value and usually results in significant savings to the property owner. In order to qualify for a farmland assessment, Illinois law states the property in question must have been used as a farm for the previous two years (viewed and documented by your assessor) in order to qualify for a

farmland assessment in the third year [35 ILCS 200/10-110]. A farmland assessment will not be given to property which is primarily used for residential purposes even though some farm products may be grown or farm animals bred or fed on the property incidental to its primary use. The assessment of real property, including farm property in Illinois, is the responsibility of your local county assessing officials. In Newport Township, Lake County, Illinois, the general rule for qualifying for farmland assessment for beekeeping is each bee hive qualifies the property owner to  $\frac{3}{4}$  acre of farmland assessment. The portion of the property used for a residence and home site is assessed at 33  $\frac{1}{3}$  % of fair market value. β



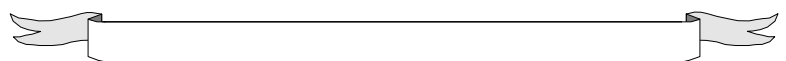
For Sale

## Bee-related items for sale?

Beginning with the next issue of the Bulletin, ISBA will be accepting non-commercial classified ads for bee-related items on a first-come first-serve, space-available basis. Description of items for sale can be sent—along with contact information - to the editor by email—

lkrengel@mc.net.

For a limited time this “experiment” will be offered at no cost—only to ISBA members.β



## January 2007 Letter from the President

Dear ISBA Members,

As I write this note to you all, I reminisce on an incredibly busy and rewarding 2006. While I will not outline the core challenges and accomplishments of the ISBA in 2006 (see the last newsletter), I will tell you that your leadership team is energized for 2007. We have set a number of key objectives for 2007 and look forward to updating you on each as we find resolution.

Many of the agenda items we as a Board face, are brought to our attention by you, the ISBA membership. Please continue to make me aware of your challenges and frustrations, within the industry. We are here to serve you!

As you plan your Beekeeping year, there are a few key updates I would like to pass-on to you. Should you have any questions, please do not hesitate to contact me or any of the ISBA Board of Directors.

[www.isba.us](http://www.isba.us)

Our ISBA website has been fully updated and redesigned! Please have a look. You will see updated local affiliate information, over 90 downloadable PDF's containing Beekeeping information, video news footage of the Evanston media coverage as well as photos of our past Beekeepers of the Year. The updated site was made public a few weeks ago and while the major bugs have been worked out, please let me know if you see any corrections or technical issues with the site.

The ISBA is planning for its 2007 Annual Spring Meeting and this year we will combine this meeting with the Midwest Beekeeping Symposium. This year, the Northern region will host the meeting and planning is well underway. Please mark your calendars for June 9, 2007. The meeting will be held at the McHenry County College Conference Center. Maps and further meeting details are on our ISBA website. As further details are made available, they will appear on the website.

Happy New Year!

Ken Haller

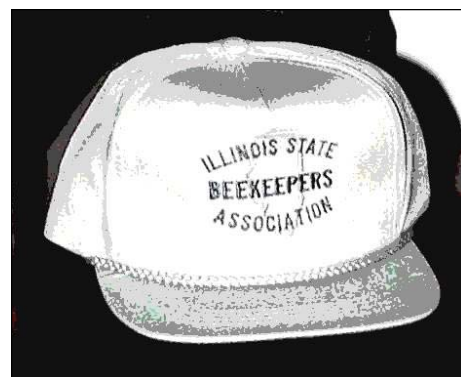
President, Illinois State Beekeepers Association

630.359.3991

[vikinghoneyfarm@comcast.net](mailto:vikinghoneyfarm@comcast.net) β

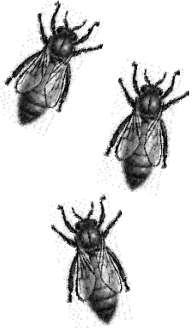
## ISBA on Solid Financial Footing

Udell Meyer, ISBA Treasurer, reported at the annual meeting that ISBA continues to be on solid financial footing. Dues income in 2006 was \$3048 while the Association's largest source of income was the sale of it honey ice cream—\$6983.96. Total Income from all sources was \$10,001.75. Considering the beginning cash balance and expenses of 10,905.35 the Association cash on hand as of November 1, 2006 was \$2516.04. The Association also maintains nearly \$4000 in interest-bearing accounts. The Treasure's complete report is on file with Secretary, Rita Taylor. Question can be addressed to Udell. β



## From the Secretary's file

- ◆ ISBA had a membership of 508 in 2006
- ◆ The largest ISBA chapter in 2006 was the Cook DuPage Beekeepers Association
- ◆ ISBA has 11 affiliated chapters
- ◆ 39 ISBA members are Members-at-large
- ◆ In 2006 ISBA paid a total of \$961.32 to send each member six copies of the Bulletin β



## The ISBA November Meeting

Clockwise from top center— Dr. Roger Hoopingarner and Stu Jacobson, two of the presenters as they discuss Dr. Hoopingarner's latest book. ISBA Director Nathan Sasse hawking the ISBA baseball caps (sorry, they are all sold out!). ISBA member Frank Gordon showing off his version of a telescoping cover (more information from Frank at [ananointed@daily-journal.com](mailto:ananointed@daily-journal.com)). Devon and Cindy Howald, who spoke to the Association on making a living in beekeeping. β



Membership in the Illinois State Beekeepers Association is open to all persons interested in bees and beekeeping. Beekeepers are urged to join through their local associations. Dues for 2006 are \$6 for the calendar year January 1 through December 31 only. Dues include a subscription to this newsletter, the ISBA Bulletin. Beekeeping journals are available at about 25% discount to members as listed below; rates are subject to change without prior notice. Make checks payable to: Illinois State Beekeepers Association and mail to: Rita Taylor, Secretary, 4274 Taylor Homestead Road, Pleasant Plains, IL 62677-4024

Please indicate new or renewal subscription when ordering journals.

Address Changes: Send old and new address six weeks prior to date of change when practical to the association secretary.

Reduced Journal Rates for 2006 (*members only*)

	1 yr	2 yr	3 yr
American Bee Journal	18.70	35.40	49.80
Bee Culture	19.00	36.00	N/A
The Speedy Bee	13.25	25.25	34.00

**ISBA Executive Board 2006**

**President**  
Ken Haller  
627 S. Saylor Avenue  
Elmhurst, IL 60126  
630 359 3991  
kenhaller@comcast.net

**Vice President**  
Phillip Raines  
16566 Best Road  
Davis, IL 61019  
815 988 3000  
raines@rainesridgefarm.com

**Secretary**  
Rita Taylor  
4274 Taylor Homestead Rd.  
Pleasant Plains, IL 62677-4024  
217 626 1319  
rjandeta@warppnet.net

**Treasurer**  
Udell Meyer  
8844 Trio Lane  
Edwardsville, IL 62025  
618 633 2429

**Directors**  
**Northern Region**  
William Buckley  
6525 S. Western Ave.  
Willowbrook, IL 60527  
630 654 1867

**Central Region**  
Nathan Sasse,  
1020 2000th Avenue  
Chestnut, IL 62518  
217 737 8219  
nasasse@frontiernet.net

**Southern Region**  
Ray Chapman  
R. R. 1 Box 215  
Bunker Hill, IL 62014  
618 585 4506  
honey@bhil.com

**ISBA Bulletin Editor**  
Larry Krengel  
9409 Voss Road  
Marengo, IL 60152  
815 923 4449  
lkrengel@mc.net

The Illinois State Beekeepers Association Bulletin (USPS 258-600) is published bimonthly at 4274 Taylor Homestead Road, Pleasant Plains, IL 62677-4024. Membership is \$6.00 per year that includes a one-year subscription to the Bulletin

POSTMASTER: Send address Corrections to Illinois State Beekeepers Association 42 74 Taylor Homestead Road, Pleasant Plains, IL 62677-4024.

Periodical



**ILLINOIS STATE BEEKEEPERS ASSOCIATION**

Rita Taylor, Secretary  
4274 Taylor Homestead Road  
Pleasant Plains, IL 62677-4024



- ⇒ Minutes from State Meeting
- ⇒ Illinois Beekeeper of the Year
- ⇒ Beekeeping and the assessor