

ILLINOIS STATE BEEKEEPERS ASSOCIATION

BULLETIN

September/October 2006 • Volume 88 Number 5

Integrated Pest Management (IPM) for Honey Bees Leveraging The Latest in Genetic, Cultural and Mechanical Pest and Disease Controls

Ken Haller

President, Illinois State Beekeepers Association

Article #4

From this series of four articles, I hope you have a new or renewed appreciation for IPM strategies as relevant, long-term strategies for healthier and more productive Honey Bees. Please remember that there is no single, simple solution to the complex issues of pest and disease management. At one time, in recent history, we thought we had found the “silver bullet” through various chemical treatments. The days of this philosophy are long gone.

In this final part, we look at three global control strategies with which you are most likely already familiar: genetic, cultural and mechanical controls. Again, these controls are best as part of your global IPM strategy as opposed to solutions by themselves.

Genetic Controls

Of all the IMP strategies, genetic controls are arguably the most simple for the Beekeeper to utilize as well as one of the most effective.

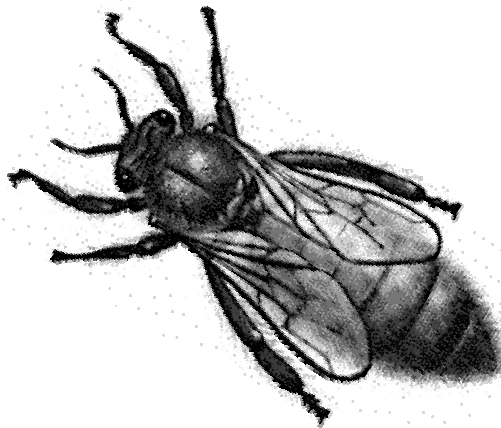
Simply stated, genetic controls refers to the development (over the long-term) of Honey Bees that have a natural “resistance” to targeted pests and diseases. Many of you are familiar with the New World Carniolan (NWC) strain of Honey Bee that has been developed for its ability to “resist or limit” the population of Varroa mites within a colony. This trait of resistance, exhibited by the NWC and among 3 or 4 other Honey Bee strains, expresses itself in a variety of functional ways. For example, while one strain of Honey Bee exhibits hygienic behaviors (cleaning the mites from their bodies as well as out of capped brood cells) other strains seem to chemically inhibit the full development of mites in a capped cell.

While research continues to look for the most effective means to limit pests and diseases, by breeding Honey Bees that naturally exhibit these resistant traits, you are less likely to need hard or soft chemicals to do the job that your Honey Bees are doing for you! As with any IPM strategy, you will be assisted by genetics but will need to watch your mite populations and treat when those populations get to an “economic injury level” (see the first IPM article).

Cultural Controls

The next two control strategies were reviewed in some detail in the previous IPM articles. Here I place them in a general context and help “connect the dots” to their place within your IPM practices. Cultural controls focus on two primary strategies: rotation of your chemi-

(Continued on page 4)



A Letter from Our President

Dear ISBA Members,

This summer has been a very busy time for the ISBA. As you already know, our primary goal is to serve you and your Beekeeping needs. The following updates outline a variety of news from numerous priorities on which we have been working.

ISBA Annual Fall Meeting

While details are in progress, please mark your calendars for 9am on November 18, 2006. The meeting will again be held in the Illinois Department of Agriculture Conference Center, in Springfield. This excellent facility has been again offered by Steve Chard. Our sincere thanks go to Steve! Address information is located in this newsletter to assist in your planning. Stay tuned to the ISBA website for the latest on the meeting.

Evanston Update

There is still no firm resolution in the Evanston Honey Bee ban debate. The council in charge of the debate has briefly discussed the topic at their last 4-5 meetings but have yet to vote on any form of regulation. The Honey Bee debate was recently scheduled for its August meeting but was dropped from the agenda just prior to the meeting. You may recall that the council voted against an outright ban on Honey Bees within Evanston but agreed to formulate some form of regulation to appease both the concerns of non-Beekeepers and the desires of Beekeepers alike. The ISBA has been intimately involved in the debate and has been present at most of the meetings.

September is National Honey Month

The ISBA encourages all of its membership to utilize this unique opportunity to spread the news about Honey, Honey Bees and Beekeeping. ISBA Vice President, Phil Raines will be speaking to various groups in September! Please take advantage of the National Honey Board's publicity as well as materials and information (available at www.nhb.org and www.honey.com) and help spread the news! I am a frequent guest on WGN radio's program "Let's Talk Gardening" and will be in the studio this September to talk ISBA, Bees and Honey. Don't forget that ISBA Members are automatically covered by our ISBA insurance package when speaking on behalf of the ISBA. There is no need to request an insurance certificate unless this is required by your host. Please do not forget that there is a \$35 charge for each certificate issued and we ask that your host or your local association pay this fee.

Increasing Problems with Selling Honey at Farmers' Markets

Early this summer, ISBA VP Phil Raines raised the concern that an increasing number of Illinois Farmer's Markets have been banning the sale of honey. This concern, raised by local health departments, has been pushed by the ever increasing terrorism laws at the federal level and the trickle-down effect of enforcement at the local level. While we all know that honey, by definition, does not require "processing" for farmer's markets, this information is not known by local governments. Phil has been researching the issue and is preparing to present the ISBA Board of Directors his recommendations at our upcoming meeting. Additionally, Charles Lorence recently attended a meeting of the Kane County Health Dept. to assess possible solutions. We should have a full update for the ISBA membership at the Fall meeting.

ISBA Website Update

By the time you get this newsletter, the ISBA website should have reached Phase III of its redesign. In Phase III, we have broken the website into more manageable pages of information, posted more photographs and are testing video playback from the site. Additionally, you will see that the site has now been completely re-designed. No longer are we limited to a simple, white background and a very long, single page. Please have a look www.isba.us

National Geographic Television Focuses on Local Beekeepers

Recently John Hansen and I were approached by National Geographic television to be part of an upcoming series on Nuisance Wildlife in an Urban Environment. The series, scheduled to air in 2007, is currently shooting in Illinois is shooting beekeepers removing a large colony from the wall of a house. Both John and I will be leveraging this opportunity to not only increase awareness of Honey Bees and Beekeeping but also Beekeeping in Illinois. A full report of the status of this series will be available at the upcoming Fall meeting.

As you can see, there are numerous, serious as well as exciting opportunities at hand with the ISBA. As you know, we cannot do this alone and need your continued support and active participation. As the Fall meeting approaches, please remember that we welcome all to be a part of our Board of Directors and would encourage your participation. If you are interested in volunteering, please contact me.

Ken Haller, President
Illinois State Beekeepers Association
630.359.3991

Celebrate the Goodness of Honey

Phillip Raines
Vice President

Illinois State Beekeepers Association

September is national honey month. Remember to call your local paper and get them to come out and do a article about honey and beekeeping. Many schools are in session and looking for speakers to start the year off. Here are some marketing tips to help increase sales. Give a two-pounder to your local school for the teachers lounge. The teachers will turn into customers. I have three banks that give free coffee to customers I have a 12 oz bear at each one. The local coffee shops also gets a free bear for the self serve area. I also put some in the employee lounge of several large hospitals. The purchasing agent called from one of them and ordered 24 two-pounders because they ran out and people started to complain about not having it. There are many more ideas. Be creative and don't be afraid to give the honey away in the right places.

When giving your talks make sure you bring plenty of 6 oz bears to give away they are cheap and will bring in customers like crazy. I have a stand at the house where people can buy honey on the honor system. I am amazed at how many people come by to say they had some of my honey at one of the places I gave it away free. It will pay it back a hundred fold. β

National Honey Month Around the Corner - Request Materials Now

September is National Honey Month, and NHB will once again provide materials for beekeepers and other honey industry members to send to their local media to publicize honey month. Materials for this year 's honey month will be provided on a CD for use by local media editors. The CD will contain honey month press releases, recipes and various other materials of interest to the media. If you would like to receive the honey month CD, please call (800) 553-7162.β

3



It's Back...Let's Celebrate

Due to popular demand, NHB has reprinted the popular "Honey, Let's Celebrate" recipe leaflet. The leaflet features six recipes for celebrations throughout the year.

Also available is "Honey of a BBQ-Winning Recipes from Grilling Fans" contains six great tailgating recipes that resulted from NHB's 2004-2005 "Honey of a BBQ" recipe contest.

Assessment-paying members can receive up to 500 free copies of one of these leaflets per year. State or county beekeeping organizations may receive up to 1,000 copies and fair organizers up to 2,000 copies. Please only request quantities needed.



For more information on the content of each of these leaflets, visit

<http://www.honey.com/recipes/broch/index.html> β

(Continued from page 1)

cal controls to maintain efficacy of the treatment as well as to lengthen the inevitable on-set of resistance developing within the target, and secondly the specific timing at which you apply the chemical treatment. We have already discussed the importance of rotating Apistan, for example, with Check-Mite instead of simply using one exclusively for Varroa control. We have also discussed the shift in thinking that you simply need to apply a chemical every Spring and Fall! Instead, a true IPM program, utilizes resistant Honey Bee stock, combined with mite population measurements and chemical treatment only when these populations reach an “economic injury level”. This system of strategies not only keeps chemicals out of your hives as much as possible, but limits chemical resistance by the mites and reserves their control to the best possible timing to kill the most mites.

Mechanical Controls

You may recall the mention of a screened bottom board in article #2. This tool to limit a Honey Bee colony’s mite population is one example of a mechanical control. In this one example, you are introducing yet another weapon against the Varroa mite, continuously working along side chemical rotation and genetic controls to assist in your IPM fight! Additional mechanical controls exist for a variety of other targeted pests. Bottom board traps, for example, exist to trap Small Hive Beetle as well as traps for ants.

It has been by hope, that throughout these four articles, you have experienced an introduction to IPM and now have enough of the basics to take some next steps in the development of your own IPM strategies. Along with this series of articles, I will post some additional, more detailed articles and research on our ISBA website for your continued reading. If you should have any comments or questions, please feel free to contact me. β

ISBA Fall meeting in Springfield—
November 18, 2006. Check the ISBA website—
www.isba.us - for the latest information.

A call for ISBA Beekeeper of the Year Nominations

The Illinois State Beekeepers Association is proud to announce the ISBA Beekeeper of the Year Program for 2006. This program is designed to recognize, on a yearly basis, an Illinois Beekeeper who most embodies, illustrates and exemplifies the key objectives of the ISBA. To promote:

- * Interest in Honey Bees and Beekeeping by encouraging good Beekeeping practices in Illinois.
- * The utilization of Honey Bees for pollination of agricultural crops.
- * The dissemination of information about Honey Bees and Beekeeping.

If you know a Beekeeper who exemplifies these objectives, is a member of the ISBA and a resident of the state of Illinois, we want to hear from you! The initial selection of Beekeeper of the Year candidates relies upon you, the ISBA membership! If you would like to nominate someone for this prestigious award, please send the following information to the ISBA Beekeeper of the Year Chairperson via mail or e-mail no later than October 2, 2006. Please send:

1. Your name, address and phone number
2. The name, address and phone number of the candidate
3. A description of why you feel the candidate should be designated the ISBA Beekeeper of the Year
4. Send this information to:

Ken Haller
627 South Saylor Avenue
Elmhurst, IL 60126

E-Mail: vikinghoneyfarm@comcast.net β



Illinois State Fair 2006 Bees and Honey Open Class

Class	1st place	2nd place	3rd place	4th place	5th place	6th place	7th place	8th place	9th place
Frame of honey for cut comb	Andy Gano	Valerie Simpson	James Belli	Garret and Grand Kaiser	John Hanson	Larry Waller			
Display of white cut-comb honey in plastic boxes	Janet Hart	Larry Waller	Andy Gano	Valerie Simpson	Garret and Grant Kaiser	James Belli	Robert Walters		
White comb honey—3 sections	Fred Gerberding	Valerie Simpson	Andy Gano	James Belli	Audrey Gerberding	Gabriel Gerberding	Dave Duty	Anna Stone	
Comb honey in round sections—3 sections	Valerie Simpson	Anna Stone	James Belli	Andy Gano	Garret and Brand Kaiser	Gabriel Gerberding	John Hanson	Fred Gerberding	Audrey Gerberding
Light extracted honey	Larry Waller	Marlin Wagner	Garret and Grant Kaiser	Janet Hart	Robert Walters	Valerie Simpson	Andy Gano	Fred Gerberding	James Belli
Amber extracted honey	Andy Gano	Valerie Simpson	Robert Walters	Audrey Gerberding	Gabriel Gerberding	James Belli	Fred Gerberding	Anna Stone	Richard Chamberland
Dark extracted honey	Valerie Simpson	Robert Walters	Andy Gano	Janet Hart	Fred Gerberding	Garret and Grant Kaiser	Marlin Wagner	Larry Waller	
Amber chunk honey	Garret and Grant Kaiser	Robert Walters	Larry Waller	Andy Gano	Valerie Simpson	James Belli	Janet Hart		
Light chunk honey	Garret and Grant Kaiser	James Belli	Janet Hart	Robert Walters	Andy Gano	Valerie Simpson			
Chunk honey in square jars	Garret and Grant Kaiser	James Belli	Robert Walters	Larry Waller	Andy Gano	Valerie Simpson	Janet Hart		
Creamed honey	Janet Hart	Robert Walters	Valerie Simpson	Ken Klopper	Garret and Grant Kaiser	Anna Stone	James Belli	Andy Gano	Fred Gerberding
Beeswax in commercial forms	Larry Waller	Anna Stone	James Belli	Ronald Fischer	Audrey Gerberding	Garret and Grand Kaiser	Janet Hart	Valerie Simpson	Andy Gano
Beeswax in art design	Fred Gerberding	James Belli	Garret and Grant Kaiser	Andy Gano	Janet Hart	Ron Fischer	Valerie Simpson	Larry Waller	
Beeswax Candles	Janet Hart	Andy Gano	Gabriel Gerberding	Anna Stone	Valerie Simpson	Nicolas Barrows	Audrey Gerberding	Garret and Grant Kaiser	Fred Gerberding
Sweepstakes	Valerie Simpson	Andy Gano	Garret and Grant Kaiser	James Belli	Janet Hart	Larry Waller			

Illinois State Fair 2006—division 1 — bees and honey—professional

Class	1st	2nd	3rd	4th
Display of white comb honey	STC	IL	CD	LL
Frame of honey for extracting	IL	STC	LL	CD
Frame of white honey for cut-comb or for packing in glass	LL	STC	IL	CD
Frame of amber honey for cut-comb or for packing in glass	STC	CD	LL	IL
Display of amber cut-comb honey in plastic 1 lb boxes (6 boxes)	LL	IL	STC	CD
Display of white cut-comb in plastic 1 lb boxes (6 boxes)	CD	IL	LL	STC
White comb honey in round sections (3 sections)	CD	STC	LL	IL
50 lbs light extracted honey	IL	LL	CD	STC
Amber comb honey in round sections (3 sections)	IL	STC	LL	CD
30 lb amber extracted honey	IL	LL	CD	STC
Dark extracted honey, 6-1 lb jars	STC	IL	LL	CD
30 lbs variety of honey in various size containers	IL	CD	LL	STC
Designs in comb honey	LL	IL	CD	STC
Light or amber chunk honey in glass jars - 3 2 1/2 lb sq. jars	LL	STC	IL	CD
Light chunk honey, 3 1 lb jars	LL	CD	IL	STC
Amber chunk honey, 3 1 lb jars	LL	IL	STC	CD
Beeswax molded in commercial shapes— 15 lbs	CD	LL	STC	IL
Art designs in beeswax, 10 lbs	LL	IL	STC	CD
Color photography	STC	LL	IL	CD
Crystallized (or creamed) honey in 3 1 lb jars	CD	STC	IL	LL
Honey gift pack	IL	LL	STC	CD
Best display booth	CD	IL	LL	STC
SWEEPSTAKES	LL	IL	STC	CD

LL—Land of Lincoln IL - Illiana CD—Cook-DuPage STC—Saint. Clair

APIARY INSPECTION SUPERVISOR'S REPORT

Steve Chard, Illinois Department of Agriculture

The 2006 Illinois State Fair has come and gone. However, I'm sure that many children and adults will have lasting positive memories of the ISBA/local beekeeping associations' exhibit in the Illinois Building at the Fair. From the honey ice cream to the observation hive to the display of honey and other honey related products to the conversations between the folks behind the counter speaking to the public, believe you me, the Apiary Industry was very well represented. Observation hives were also placed in Conservation World and in the Illinois Department of Agriculture tent. It takes a lot of hard work on the part of numerous individuals to put together and carry out this type of exhibit. A big pat on the back for those folks who contributed their valuable time and effort in making this one of the best exhibits at the Fair!

As usual, we are conducting many apiary inspections this year and I'm happy to report that we are finding few problems with American foulbrood, chalkbrood and varroa mites through August of this year. We certainly hope those good conditions continue. I wish that I could report the same with the small hive beetle. Add Vermilion County to the list of counties (now 10) that have confirmed cases of small hive beetle. Thus far, these beetle finds are at isolated locations and there are no major infestations in any of the 10 counties. However, we continue to recommend that beekeepers be vigilant for this major pest of the honeybee and to treat accordingly. Of course, it's imperative that beekeepers strictly following the label instructions of the commercially available products for controlling the beetle. In addition, always feel free to contact your local IDOA Apiary Inspector if you're interested in an inspection being conducted to check for the beetle.

You never know where beekeeping will lead next. For example, the IDOA and other agencies recently participated in a simulated nuclear accident exercise that involved an explosion at the Braidwood Power Station in Grundy County. The State of Illinois' overall response to the **make-believe accident** was handled through the Illinois Emergency Management Agency's State Emergency Operations Center. In addition, field exercises were conducted as part of this event. The field exercise included taking samples of honey from hives in Grundy County to check for possible food contamination. State and federal officials that accompanied the IDOA for collecting honey samples were fascinated with the bees and beekeeping in general. I'd say that the apiary industry got a lot of good "exposure" in conjunction with the exercise.

I look forward to seeing you at the ISBA Fall Meeting at the Illinois Department of Agriculture on November 18, 2006.β



Will there be a next generation of beekeeper?

Angry bees attack crashed car in Indiana

OSSIAN, IND. - A teenage driver crashed into a hollow tree and stirred up tens of thousands of angry honeybees, creating a swarm that sent her and nine others to the hospital.

"Those bees were mad," said Volunteer Fire Chief Kent Gilbert, who was stung at least 50 times while trying to pull the 16-year-old driver from the wreckage. "I've never seen bees, especially honeybees, attack like that."

Jacqueline Cossairt's SUV hit the tree Tuesday after she lost control on a gravel road about 10 miles south of Fort Wayne.

By the time rescuers arrived, a black cloud of buzzing bees had engulfed the car, forcing firefighters to wear full safety gear -- complete with oxygen tanks and face masks -- with temperatures in the 90s.

Safety workers doused the bees with water and foam while they tried to free Cossairt, who was taken to a nearby hospital with broken legs and multiple stings. She remained at Lutheran Hospital on Thursday.

A neighbor, a paramedic and seven firefighters also were hospitalized for bee stings and heat-related symptoms.

"You can't really train for that. You don't really know. You look for downed power lines. You don't look for a million bees," said Master Trooper Bob Brophy, commander of the Indiana State Police's Fort Wayne post.

Bee expert Stan Grove, a biology professor at Goshen College, said the insects are most active in warm weather when they furiously fan their wings to cool the temperature of the hive.

"They don't like to be jostled," Grove said.β

Membership in the Illinois State Beekeepers Association is open to all persons interested in bees and beekeeping. Beekeepers are urged to join through their local associations. Dues for 2006 are \$6 for the calendar year January 1 through December 31 only. Dues include a subscription to this newsletter, the ISBA Bulletin. Beekeeping journals are available at about 25% discount to members as listed below; rates are subject to change without prior notice. Make checks payable to: Illinois State Beekeepers Association and mail to: Rita Taylor, Secretary, 4274 Taylor Homestead Road, Pleasant Plains, IL 62677-4024

Please indicate new or renewal subscription when ordering journals.

Address Changes: Send old and new address six weeks prior to date of change when practical to the association secretary.

Reduced Journal Rates for 2006 (*members only*)

	1 yr	2 yr	3 yr
American Bee Journal	17.96	34.05	47.89
Bee Culture	19.00	36.00	N/A
The Speedy Bee	13.25	25.25	34.00

ISBA Executive Board 2006

President
Ken Haller
627 S. Saylor Avenue
Elmhurst, IL 60126
630 359 3991
kenhaller@comcast.net

Vice President
Phillip Raines
16566 Best Road
Davis, IL 61019
815 988 3000
raines@rainesridgefarm.com

Secretary
Rita Taylor
4274 Taylor Homestead Rd.
Pleasant Plains, IL 62677-4024
217 626 1319
rjandeta@warpsnet.net

Treasurer
Udell Meyer
8844 Trio Lane
Edwardsville, IL 62025
618 633 2429

Directors
Northern Region
William Buckley
6525 S. Western Ave.
Willowbrook, IL 60527
630 654 1867

Central Region
Nathan Sasse,
1020 2000th Avenue
Chestnut, IL 62518
217 737 8219
nasasse@frontiernet.net

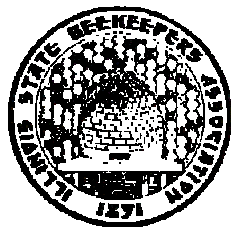
Southern Region
Ray Chapman
R. R. 1 Box 215
Bunker Hill, IL 62014
618 585 4506
honey@bhil.com

ISBA Bulletin Editor
Larry Krengel
9409 Voss Road
Marengo, IL 60152
815 923 4449
lkrengel@mc.net

The Illinois State Beekeepers Association Bulletin (USPS 258-600) is published bimonthly at 4274 Taylor Homestead Road, Pleasant Plains, IL 62677-4024. Membership is \$6.00 per year that includes a one-year subscription to the Bulletin

POSTMASTER: Send address Corrections to Illinois State Beekeepers Association 42 74 Taylor Homestead Road, Pleasant Plains, IL 62677-4024.

Periodical



ILLINOIS STATE BEEKEEPERS ASSOCIATION

Rita Taylor, Secretary
4274 Taylor Homestead Road
Pleasant Plains, IL 62677-4024

State Meeting November 18, 2006

- ⇒ *National Honey Month*
- ⇒ *More on IPM*
- ⇒ *State Fair Results*
- ⇒ *Beekeeper of the year nominations*

